



FrishLuft

ERV AIR EXCHANGER

Embrace fresh air, experience true comfort.

FEATURES

- ABS encapsulated DC motor, 10 speeds
- Primary washable filter MERV6, MERV13 optional
- Flexible installation: suspended x wall mounted
- Enthalpic energy exchange core
- Casing made with galvanized steel sheet, rust-proof
- EPP foam insulation
- Auto-defrosting function
- Low profile, fits in bulkhead and drop ceilings, slim height
- No drains required
- Commercial and residential use

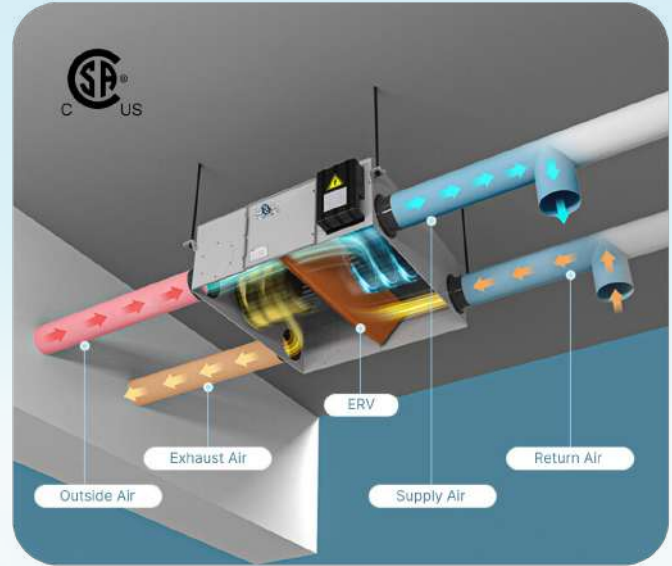
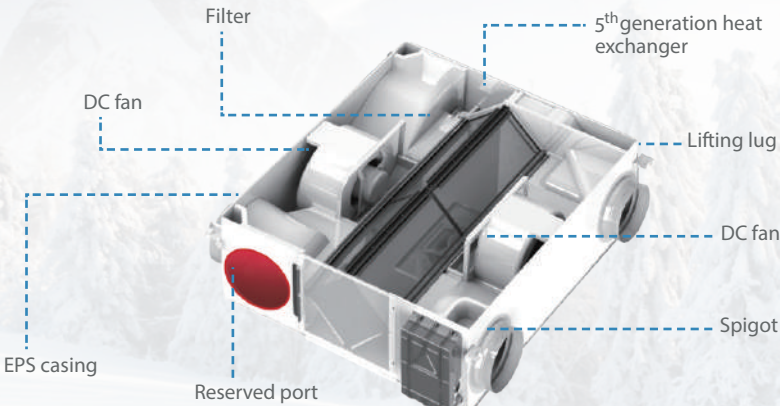
LCD WIRED CONTROLLER

- Heat Recovery Mode
- Auto Mode
- Bypass Mode
- Sleep Mode



And advanced functions as:

- Low temperature operation
- Intelligent airflow compensation



High Efficiency



Energy Saving



Intelligent Control



Easy Maintenance

HOW TO SELECT THE RIGHT MODEL

The ASHRAE 62.2 standard defines the minimum ventilation rates required for residential buildings. The formula for calculating the minimum airflow rate (in cubic feet per minute, CFM) is:

$$CFM = 0.01 \times \text{floor area (sq.ft)} + 7.5 \times (\text{no. of bedrooms} + 1)$$

For example, if you have a 2,000 square foot home with 3 bedrooms:

$$CFM = 0.01 \times 2,000 + 7.5 \times (3 + 1)$$

$$CFM = 20 + 30 = 50 \text{ CFM}$$

ASHRAE 62.2-2010

Required Continuous Ventilation Rate (CFM)

Floor Area Sq. Ft	0-1 BR	2-3 BR	4-5 BR	6-7 BR	>7 BR
<1,500	30	45	60	75	90
1,501-3,000	45	60	75	90	105
3,001-4,500	60	75	90	105	120
4,501-6,000	75	90	105	120	135
6,001-7,500	90	105	120	135	150
>7,500	105	120	135	150	165

* Based on the 2010 ASHRAE 62.2 standard

ACCESSORIES

Humidity Sensor

CO2 Sensor

Wifi Module

Smart Air Quality Monitor

MERV13 filter





TECHNICAL PARAMETERS

Model Name	BEAIR-100	BEAIR-150	BEAIR-200	BEAIR-300
Airflow (CFM at 0.2 in. w.g.)	106	162	229	318
Airflow (CFM at 0.4 in. w.g.)	89	147	206	294
Power Consumption (Watts)	83	93	129	180
Fan Efficacy at 32°F (CFM/Watt)	1.28	1.74	1.78	1.77
Apparent Sensible Efficiency at 32°F*	86.4	85.4	89.2	83.7
Sensible Recovery Efficiency at 32°F*	81.4	84.3	87.6	82.6
Total Recovery Efficiency at 95°F	53.6	52.1	59.2	50.1
Noise dB(A)	29	28	32	34
Power Supply	120V/60Hz/1ph			
N.W. (kg/lb)	20/44.1	23/50.7	30/66.1	33/72.7

* Performance at low speed.

■ BEAIR-100

Supply Temperature		Net Air Flow		Power Consumed (Watts)	Sensible Recovery Efficiency (%)	Apparent Sensible Effectiveness	Net Moisture Transfer
°F	°C	L/S	CFM				
Heating							
32	0	13.9	29.4	21	81.4	86.4	34
32	0	27.7	58.8	65	70.5	78	21
32	0	41.6	88.2	83	68.5	74.5	37
Cooling							
95	35	41.6	88.2	83	Total Recovery Efficiency		53.6

■ BEAIR-150

Supply Temperature		Net Air Flow		Power Consumed (Watts)	Sensible Recovery Efficiency (%)	Apparent Sensible Effectiveness	Net Moisture Transfer
°F	°C	L/S	CFM				
Heating							
32	0	27.7	58.8	17	84.3	85.4	29
32	0	41.6	88.2	30	77.4	79.8	21
32	0	69.4	147.1	93	71.7	74.7	33
Cooling							
95	35	69.4	147.1	93	Total Recovery Efficiency		52.1

■ BEAIR-200

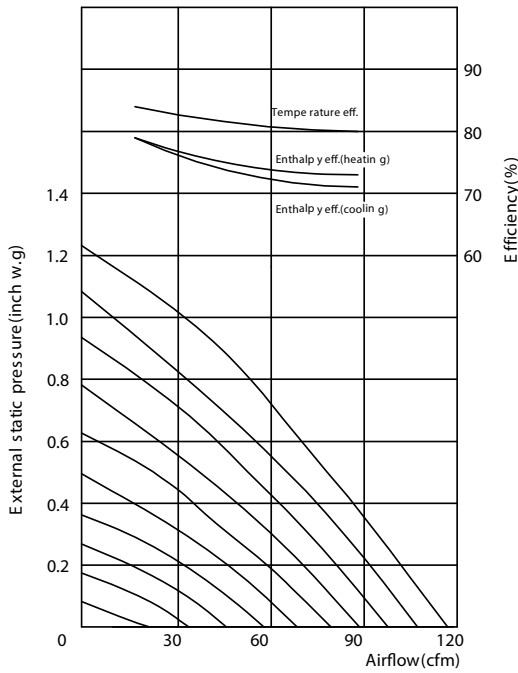
Supply Temperature		Net Air Flow		Power Consumed (Watts)	Sensible Recovery Efficiency (%)	Apparent Sensible Effectiveness	Net Moisture Transfer
°F	°C	L/S	CFM				
Heating							
32	0	27.7	58.8	23	87.6	89.2	50
32	0	55.5	117.6	47	78.9	80.5	45
32	0	97.1	205.9	129	74.8	77.4	45
Cooling							
95	35	97.1	205.9	129	Total Recovery Efficiency		59.2

■ BEAIR-300

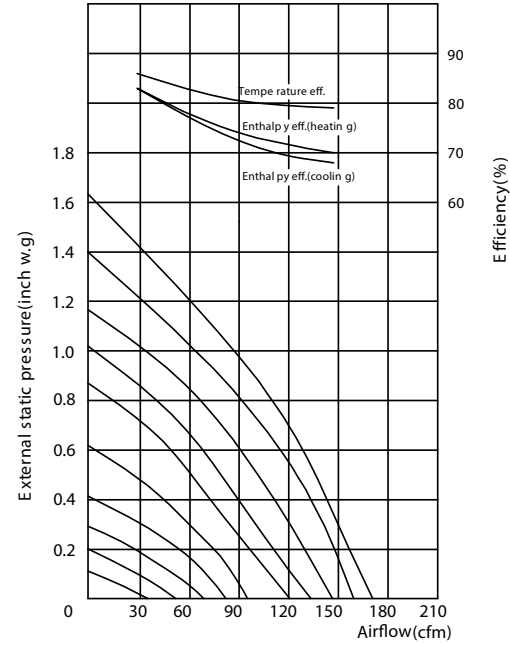
Supply Temperature		Net Air Flow		Power Consumed (Watts)	Sensible Recovery Efficiency (%)	Apparent Sensible Effectiveness	Net Moisture Transfer
°F	°C	L/S	CFM				
Heating							
32	0	55.5	117.6	31	82.6	83.7	36.5
32	0	97.1	205.9	73	76.5	78	45.8
32	0	138.7	294.1	180	71.2	73.5	41.7
Cooling							
95	35	138.7	294.1	180	Total Recovery Efficiency		50.1

PERFORMANCE CHARTS

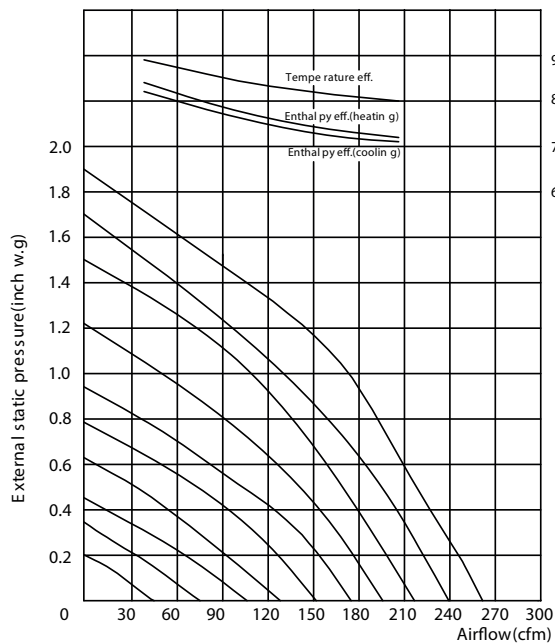
■ BEAIR-100



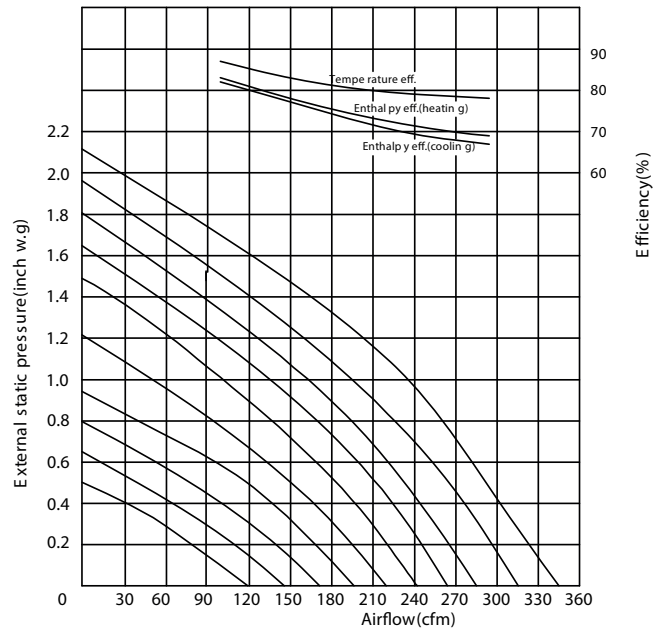
■ BEAIR-150



■ BEAIR-200



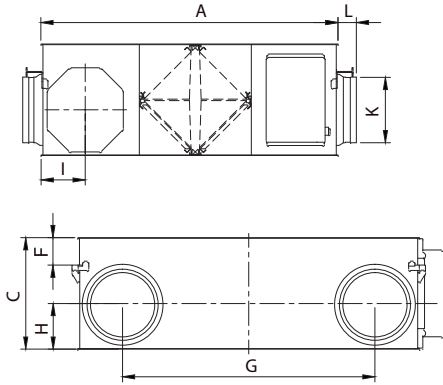
■ BEAIR-300



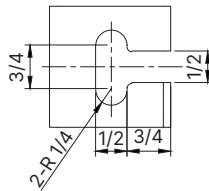
DIMENSIONS



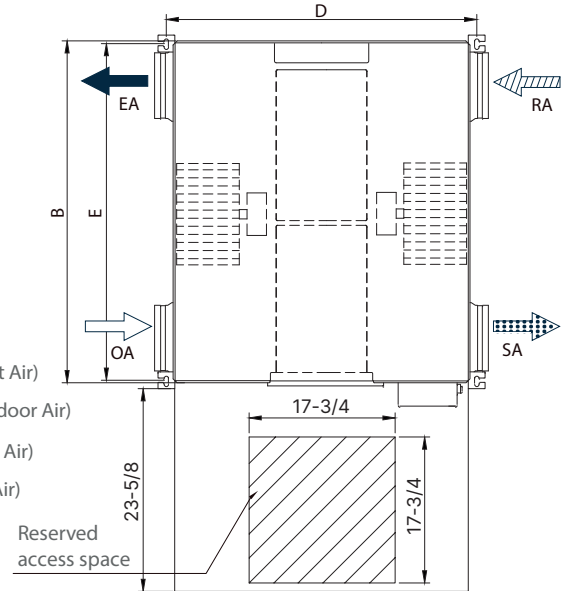
BEAIR-100 to BEAIR-300



Lifting lug size, suitable for BEAIR-100 to BEAIR-300



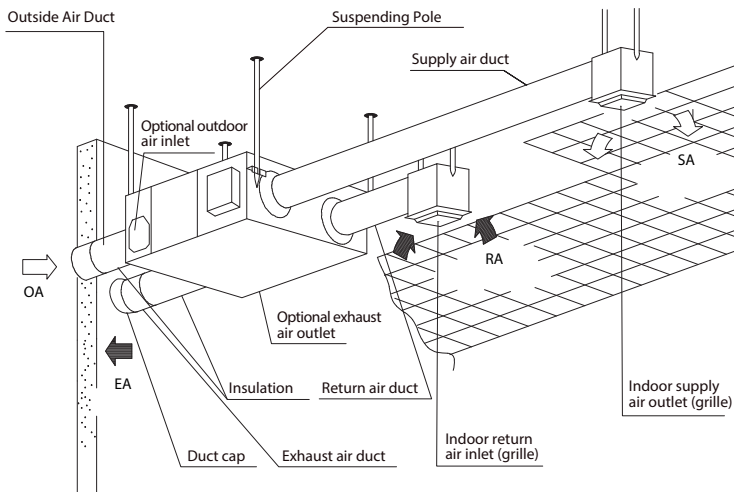
- Stale Air to Outside (Exhaust Air)
- Fresh Air from Outside (Outdoor Air)
- Stale Air from Inside (Return Air)
- Fresh Air to Inside (Supply Air)



Unit: in

Model	Dimension			Lifting lug size			Duct distance			Air inlet/outlet size	
	A	B	C	D	E	F	G	H	I	K	L
BEAIR-100	30-3/4	24	11-1/2	32-1/4	23-1/2	3	17-3/4	3-3/4	4-1/2	3-3/4	2
BEAIR-150	30-3/4	29	11-1/2	32-1/4	28-1/4	3	20-3/4	3-3/4	4-1/2	5-3/4	2-1/4
BEAIR-200	34-3/4	34-1/2	13	36-1/4	33-3/4	3-1/4	25-1/2	5-1/4	5-1/4	5-3/4	2-1/4
BEAIR-300	34-3/4	40	13	36-1/4	39-1/4	3-1/4	29-1/2	5-1/4	5-1/4	7-3/4	2-1/2

INSTALLATION DIAGRAM



BEAIR-100 to BEAIR-300

WARRANTY

Our devices carry a 5-year ERV core warranty and a 5-year parts replacement warranty.

Date: _____

Project: _____

Qty.: _____

Engineer: _____

Order no.: _____

Entrepreneur: _____

Supplier: _____

Submission #: _____

Submitted by: _____